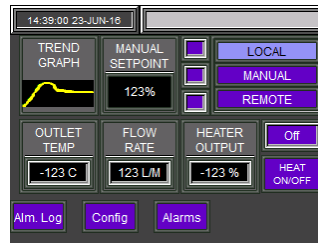
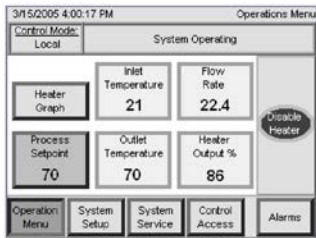


LUF-* and LLT-* Models

Lufran Update Presentation

What Are We Doing?

- Lufran is being updated
 - Modernizing human interfaces and circuitry
 - Elimination of parts made redundant by past design changes
 - Parts becoming obsolete
- We have made a few changes to model numbers and models to better meet diverse customer and application requirements



New Model Numbers

- Models now start with “LUF-” or “LLT-”
 - LUF-* models are updated versions of the standard Lufran
 - LLT-* models are designed for value applications. They use PID control instead of DAC control
 - Formalizing the former “-LC” option
 - This distinguishes these new models from older ones for customers that have both
- Legacy models will be available for a limited time only due to impending parts obsolescence

New Lufran, Same Performance

- Control loops are the same as they were before – just running on an updated PLC
 - Same $\pm 0.3^{\circ}\text{C}$ temperature accuracy ($\pm 3^{\circ}\text{C}$ for LLT-*)
- Wetted surfaces have not changed

Key Model Ordering to LUF-* and LLT-* from Legacy Units

- CE is now optional (-CE option)
- Leak Detect is now optional (-LK option)
- Stack Light is now optional (-SK option)
- Remote Interface cable is now an accessory on models without an -R# option. Still standard on R# models

Cables and Interfaces (LUF-* and LLT-*)

- 37-pin interface connection still standard on side of the Lufran cabinet
- For units without -R# interface options, we include a mating connector and pins standard with the Lufran (in a bag)
- Cables are available as accessories
 - RIC-50 (50ft) and RIC-100 (100ft)
 - RIC-50 included with optional -R# interfaces